



# Internet Philatelic Dealers Association Inc ©

## Established 23rd February 2002



Page 1  
December 2015  
Volume 13 Issue 12

### NEWSLETTER DECEMBER 2015

#### INSIDE THIS ISSUE:

EDITORS COLUMN	1
UP FOR DISCUSSION	2
31ST ASIAN EXHIBITION	3
STAMPS CONDITION GUIDE	4
ARTHUR MAURY	6
MEMBERS CHRISTMAS CROSSWORD	7
JOÃO MACHADO	8
CLOSING REMARKS	8

#### EDITORS COLUMN

Welcome again to the Newsletter. I would like to start by wishing everyone a wonderful Christmas season. Only a few more weeks and I hope all of you will be enjoying a break and will be spending happy times with family and friends. I will be in the Philippines, in Laoag actually, sunbathing and swimming and enjoying some lovely food, and just having a great time with some people who are very dear to me.

I started writing this issue in early November because I have a busy month and was once again wondering what to write about. A few things new. Look at page 7 for example. You may like to print just that page, and send me your response. I won't say more than that at this stage. I have test printed the page and it is ok. I suggest you print it. Complete it, scan it and return to me at [michaelatipda@gmail.com](mailto:michaelatipda@gmail.com) before 7th December.

As it is Christmas I will send a Christmas present to whoever is the first person to send me the correct answers. I have in mind a little Christmas hamper. I will decide when I see who the winner is and where the winner lives. The only condition to winning, apart from correct answers, is that you must send me your full mailing address and local telephone number. Without that I cannot arrange with a courier your prize. No details and the second person with correct details etc will be the winner.

On another note, I would like to thank everyone who has provided material for this Newsletter over the past year. There are a few of you who regularly send me ideas and / or material. I do value your emails. I may not use it all I admit because I do try to reflect the expectation of the members.

The Newsletter did get some active discussion and comment from a few members on the topic of SG Marketplace. At last. You are all so shy it amazes me. But anyway it was great feedback and excellent points. I had hoped to spend time talking to SG people at the 31st Philatelic Asian Exhibition here in Hong Kong last week but they were all busy with customers and so I did not get a look in. There is more on the exhibition on page 3. Mostly pictures, what is there to say, it was a stamp exhibition and you have all been to one.

I said in the last issue I would do something on world wide Christmas issues. But since I have received nothing and I seem to have used the 8 pages I will pass on that.

As for the philatelic scene here in Hong Kong. I was not able to get to the Keller Auction on the 14th, but from the results I have seen prices were good so it seems fair to say the market is still strong. Also, there was certainly a lot of China and Hong Kong material (to be expected of course) at various dealer stands at the Hong Kong Show last week although I felt the prices had been "bumped up" shall I say.

Have a great month. Please promote the IPDA whenever or wherever you can, It is for all our benefit.

Best wishes, be safe, be well.

Michael [michaelatipda@gmail.com](mailto:michaelatipda@gmail.com)



#### Stamp of the Month

Yes, 50 years ago.!

On December 9, 1965, millions of Americans learned what Christmas is all about.

That evening, A Charlie Brown Christmas, the first animated special featuring characters from Charles Schulz's comic strip Peanuts, aired on CBS.

Issued in October 2015 this stamp is from a booklet of 20 stamps which features 10 still frames from A Charlie Brown Christmas (two of each design).





Internet Philatelic Dealers Association Inc ©

Established 23rd February 2002



Page 2  
December 2015  
Volume 13 Issue 12

## NEWSLETTER DECEMBER 2015

### UP FOR DISCUSSION

*Editors Note: this is dated a few years ago from the American Stamp Dealers Association. It is abridged from a longer piece from their website [here](#). I thought it might be a useful topic for us to read, or read again, as the case maybe. I suspect most of us are not promoting ourselves as dealers selling stamps as an investment, but to collectors wishing to improve their collections. All the same, some useful tips and guidance in this material. With full acknowledgment and thanks to the ASDA and their website. All comments most welcome.*

#### The Stamp Dealer's Obligations and Responsibilities When Selling Stamps as an Investment

This is published as a public service by the ASDA as a guide to those who might desire information on investing in philatelic properties. While every effort has been made to be thorough and informative, no claim is made for its completeness or accuracy, and no present or future liability shall be incurred by the ASDA as a result of publishing and/or distributing this pamphlet.

It is sole responsibility of each investor to make his or her own decisions, and this pamphlet is designed to inform and aid such investors to make such decisions.

It is the stamp dealer's obligation to provide as much pertinent information as possible to the prospective investor. This information should be current and include the dealer's qualifications, the role of stamps in meeting the investor's goals, risks in philatelic investing, the purchase, storage, and disposition of philatelic material and other pertinent data.

#### Qualifications To Sell Stamps As An Investment Or To Act In The Capacity Of A Stamp Investment Counsellor

The stamp dealer should provide to all prospective investors information indicating his or her qualifications. The investor should ask for the following information:

##### A. Investment Knowledge

1. Courses related in Economics, Investments, Finance, and Accounting
2. Experience related in Economics, Investments, Finance, and Accounting

##### B. Philatelic Experience and Employment

1. Dealer? Part-time? Full-time? Firms? How long?
2. Philatelic Society Memberships
  - a. Dealer organizations – how many continuous years?
  - b. Collector organizations – how many continuous years?

##### C. Business status

1. Form of business you are dealing with; partnership, corporation, sole proprietor. Who are the principal parties from who you are buying?

Philatelic prices are determined by supply and demand; they will go up and down with the demand; to purchase items. The dealer has a responsibility to reveal and discuss with a prospective investor that there are various hazards and risks in philatelic investing. The following factors should be included in such a discussion:

##### A. Influence of time on risk, both short and long term

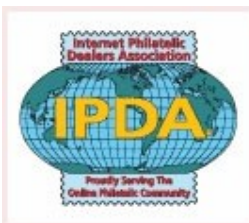
##### B. Influence of the age of the stamp on risk

1. Classic issues
2. Intermediate issues
3. New Issues

##### C. Stamp production

1. There are countries and firms that print stamps and covers which have little or no relationship to that nation's postal system. Many stamp issues are demonetized shortly after issue.
2. There are fakes, forgeries, and altered items in the market place.





Internet Philatelic Dealers Association Inc ©

Established 23rd February 2002



Page 3  
December 2015  
Volume 13 Issue 12

## NEWSLETTER DECEMBER 2015

### HONG KONG - 31ST ASIAN INTERNATIONAL STAMP EXHIBITION



## HONG KONG 2015

### 31st Asian International Stamp Exhibition

香港2015 - 第三十一屆亞洲國際郵票展覽

Your editor attended this show. In fact my second International show this year. Hope you enjoy these pictures and my few words about the show.

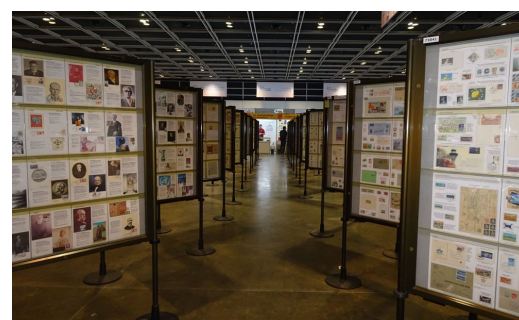
This international exhibition, hosted brilliantly by the Hong Kong Philatelic Society and sponsored by Hong Kong Post, consisted of the Exhibition Area, Court of Honour, Youth Corner and dealer stand showcasing a wide array of stamp exhibits. I read there were 224 competitive exhibits occupying 952 frames from 20 FIAP member Federations. Some really interesting aviation displays which I could have spent many more hours reading had I the time.

I enjoyed the dealer stands and while the Hong Kong and China items I saw seemed to have higher than expected prices I was impressed with the number of "junk" boxes one could also look through. I always look for anything aviation related and did find a few commercially used envelopes that I was able to pick up for a dollar (US\$)



Great to see Royal Mail there making a mint from the Post and Go Machines. They are seriously just printing money for themselves. I expect to meet up with the guy running the stand in Taiwan next year. He said he would be there. RM did do a nice job I thought with one of the collector strips. I show one stamp from the strip of 6 below.

For more and philatelic issues and details please read [here](#)





# Internet Philatelic Dealers Association Inc ©

## Established 23rd February 2002



Page 4  
December 2015  
Volume 13 Issue 12

### NEWSLETTER DECEMBER 2015

#### STAMP CONDITION GUIDE ...WITH THANKS TO JAY SMITH & ASSOCIATES

*Editors Note: In a recent blog post I showed a stamp I was listing in my Store and another (same) stamp that I found on a large auction site. I wrote about the two examples and the condition rating they had. Mine I classified as Fine Used, the other was stated as Very Fine Used, even though it had a short corner perforation. My writing provoked some interesting and constructive dialogue. One writer sent me the following which I am sharing with readers because I think it is well worth seeing. Acknowledgement and credit for the material to Jay Smith and Associates. Please see more about him and his web site [here](#) One final comment: I also refer readers to the SG guide for Condition which comes with excellent images as well Perhaps this is a useful reminder to us. Let me know your thoughts as I am sure there are many views*

Superb	Perfectly centered.
XF	Extremely Fine. A descriptive term usually found in descriptions of U.S. stamp issues. A middle range between Superb and VF.
VF	Very Fine. Will please the most discriminating collector. <b>Perforated Stamps:</b> Very well centered with almost equal margins. <b>Perforated Stamps with Naturally Small Margins:</b> Very well centered, however, depending upon the standards of the stamp issue, the perforations may cut or touch the design on one or two sides. <b>Imperforate Stamps:</b> All four margins are clear of the design and will not cut or touch the design.
F-VF+	Fine to Very Fine Plus. A middle range between VF and F-VF.
F-VF	Fine to Very Fine. A middle range between Fine and VF. <b>Perforated Stamps:</b> Well centered, but off in one direction with two opposite margins roughly equal. <b>Perforated Stamps with Naturally Small Margins:</b> Depending upon the standards of the stamp issue, the perforations may cut or touch the design on two or three sides. <b>Imperforate Stamps:</b> Three margins are clear of the design. Margin may cut or touch the design on one side.
F+ or Fine+	Fine Plus. A middle range between F-VF and Fine.
F or Fine	Fine. <b>Perforated Stamps:</b> Design off in two directions, however, the perforations do <b>not</b> cut or touch the design. <b>Perforated Stamps with Naturally Small Margins:</b> Depending upon the standards of the stamp issue, the perforations may cut or touch the design on three or four sides. <b>Imperforate Stamps:</b> Two margins are clear of the design. Margin may cut or touch the design on two sides.
Ave	Average. <b>Perforated Stamps:</b> The perforations do cut or touch the design on one or more sides. <b>Perforated Stamps with Naturally Small Margins:</b> Depending upon the standards of the stamp issue, the perforations may cut or touch the design on all sides. <b>Imperforate Stamps:</b> Margin may cut or touch the design on three or four sides.
SD	Slightly Damaged. A presentable example, but may have a thin, crease, pulled perf, etc. that it usually not fully obvious or detracting from the front.
SF	Space Filler. A seriously damaged example with obvious defects, even to the extent of a piece missing.
NH, UM, ★ ★	Never Hinged Original Gum, Unmounted, Postfrisk.
Mint, MM ★	Mint Hinged, Mounted Mint Stamps are Mint with original gum, but are hinged. Generally this will also indicate that the stamps are Lightly Hinged (LH) unless otherwise mentioned.

Cont'd.....





# Internet Philatelic Dealers Association Inc ©

## Established 23rd February 2002



Page 5  
December 2015  
Volume 13 Issue 12

### NEWSLETTER DECEMBER 2015

#### STAMP CONDITION GUIDE.... CONT'D WITH THANKS TO JAY SMITH & ASSOCIATES

LH	Stamps are Mint Lightly Hinged with original gum.
OG	Original Gum.
NG ☆	No Gum.
RG	Regummed.
pp	Pulled perforation.
Used ⊙	In most general sense, means stamps are not mint, i.e. the stamps are canceled. Will generally mean stamps are postally used.
Postally Used ⊙ ⊙	Stamps are genuinely Postally Used, thus are <b>not</b> canceled to order and <b>not</b> with first day cancels, etc.
Canceled ●	In most general sense, means stamps are not mint, i.e. the stamps are canceled. Specifically will mean that the stamps <b>may</b> be canceled to order, have first day cancels, or perhaps may be postally used but that cannot be determined positively.
fl, flr, fluor	Fluorescent, sometimes also listed in catalogs as phosphorescent. Shows reaction under Ultraviolet (UV) light. The color of the reaction depends upon the chemicals used in or on the paper. <b>For Scandinavian stamps, a LONG-WAVE UV light source is required.</b> For stamps of other areas, including the U.S. a SHORT-WAVE UV light source is often required. See <a href="#">this article</a> for more information.
nfl, nonfluor	Non Fluorescent. No reaction under UV light.
yfl	Yellow Fluorescent reaction under UV light.
wfl	White Fluorescent reaction under UV light.
FDC	First day cover.
Unaddressed	In the context of First Day Covers: No address has been written or typed onto the FDC, thus it could not have been mailed. In some cases, an address may have been <b>printed</b> on the FDC at the same time the cachet was printed (if it has a cachet); in those cases, the address is considered to be part of the cachet and the FDC is not considered to be addressed.
Addressed	In the context of First Day Covers: An address has been written, typed, or labeled onto the FDC, thus it may have been mailed. In some cases, an address may have been <b>printed</b> on the FDC at the same time the cachet was printed (if it has a cachet); in those cases, the address is considered to be part of the cachet and the FDC is not considered to be addressed.
Addressed Used	In the context of First Day Covers: An address has been written, typed, or labeled onto the FDC, <b>and there is postal evidence, such as postmarks or sorting machine marks, that the FDC actually passed through the mail.</b>
Registered	In the context of First Day Covers: The FDC has been <b>sent through the mail via registered mail</b> and thus usually bears a registered mail label and usually bears postal markings on the reverse. Covers having been sent in this manner often also have manuscript notations of delivery attempts by postal workers; these are not considered to be defects on registered mail FDCs. Of course the FDC must have been addressed to be sent by registered mail.



Internet Philatelic Dealers Association Inc ©

Established 23rd February 2002



Page 6  
December 2015  
Volume 13 Issue 12

## NEWSLETTER DECEMBER 2015

### ARTHUR MAURY JULY 31, 1844 - 1ST DECEMBER 1907)

*Editors Note: A little bit of history that I thought might interest some readers. This has mostly been translated from French so my apology if it is not perfect English in the translation. Any errors are mine and with apology to those who know more than I do, or I have found in my research.*

Arthur Maury, was a French philatelist and author of several philatelic reference works. At age 16 he began stamp dealing and his interest flourished into a lifelong occupation.

He was an able and prolific writer and in 1864 he founded a monthly journal, *Le Collectionneur de Timbre-poste*. In 185 he published the first edition of "Catalogue complet des timbre-poste", which became the standard for collectors and dealers.

He also included in his writings a commentary of cancellations, including those of the Franco-Prussian War of 1870. He was therefore one of the first philatelists to have gone beyond the simple collection and writing about stamps. He also supported the choice of the word "philately" to describe this passion compared to the designation "timbrologie" advocated by another French philatelist, Dr. Jacques Legrand.

Another aspect to Maury's work was his printing of the first issue of Ethiopia in 1894, and in 1896 he made available to collectors an unauthorised postage due overprint that was never used in Ethiopia. In 1900 he sold the first issue at a discount to face value, a deed that ruined the market and forced the creation of annual control of overprints back in Ethiopia. He survived his transgressions and served as the honorary President of the French Philatelic Society.

His own catalog, was reissued endlessly, first by himself and then by his successors until 1980. On the eve of his death in 1907, he saw another of his works published. This was his book of 648 pages: the *Historie des Timbres-Poste Francais*, *History of French postage*, stamps, which still is an authority and has become the famous catalog Maury.

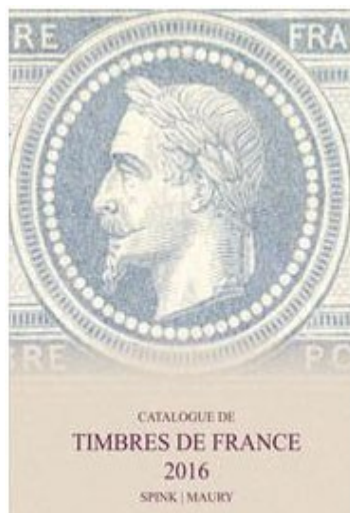
He was a member of the French Society of Timbrologie founded in 1875 by Jacques Legrand.

In May 2010 he was commemorated on a stamp issued by France.

In May this year (2015), Spink & Son Ltd, the London based auctioneer and collectables dealer, announced it had acquired the Arthur Maury Philatelic Catalogues.



A 1908 copy of the Arthur Maury 1908 World Stamp Catalogue



Spink, 2016 catalogue published November 2015

Included in the sale are the rights to and control of the current stock and future editions of these books.

The list includes the annual *Timbres de France Catalogue*, the first catalogue of postage stamps in the World, now in its 118th edition, together with the specialised editions covering *Timbres de l'ex-empire francais d'Afrique*; *Timbres des Bureaux Francais, Anciennes Colonies, et zones d'Occupation ed Europe et Asie*; *Timbres de DOM-TOM* and *Timbres des principautes et Terres polaires, Andorre, Monaco, Saint-Pierre & Miquelon, T.A.A.F. Europa*.

Spink's announced that the Maury catalogues will continue to provide the highest level of detail for the stamps and covers of France and the French colonies.





Internet Philatelic Dealers Association Inc ©

Established 23rd February 2002



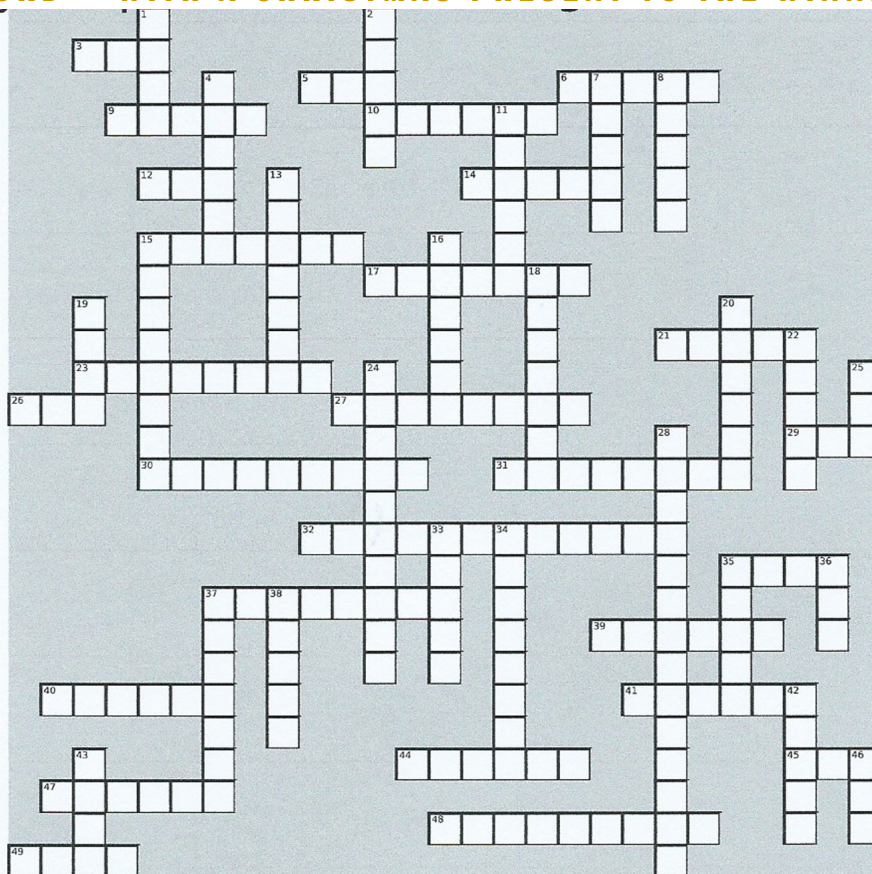
Page 7

December 2015

Volume 13 Issue 12

## NEWSLETTER DECEMBER 2015

### IPDA CROSSWORD — WITH A CHRISTMAS PRESENT TO THE WINNER.



#### Across

- 3 cancelled with full gum
- 5 An official United States post office for use by U.S. military naval units abroad.
- 6 The basic printing unit on a press used to produce stamps.
- 9 A binder and pages designed for the mounting and display of stamps
- 10 A printing process that transfers an inked image from a plate to a roller.
- 12 Stamps sharing common design elements
- 14 The outer portion of a stamp design,
- 15 Stamps perforated through the face with identifying initials,
- 17 The marginal paper on a sheet or pane of stamps
- 21 A pattern of parallel lines or dots at the points where lines would cross forming a grid.
- 23 Item distributed to Universal Postal Union members for identification purposes
- 26 The original engraving of a stamp design
- 27 Printed in two colors.
- 29 EKU: The cover or piece that documents the earliest date on which a stamp or postal stationery item is known to be used.
- 30 Those french are head to tail again (2 Words)
- 31 Those french guys are joined together (2 Words)
- 32 A two-part postal marking consisting of a cancel and a postmark. (2 Words)
- 35 A defect in a plate that reproduces as an identifiable variety in the stamp
- 37 Canada, New Zealand, and Rhodesia, definitive nickname
- 39 A revenue stamp or similar label denoting the payment of tax.
- 40 a stamp or seal with a french disposition
- 41 Stamps valid within a limited area or within a limited postal system
- 44 A meeting of stamp collectors and/or dealers
- 45 automatic teller machine
- 47 British definitive first issued in 1967.
- 48 A paper showing few differences in texture and thickness when held to light (2 Words)
- 49 describing when when the cancel extends over both the stamp and the envelope paper.

#### Down

- 1 Stamps processed in a long single row and prepared for sale in rolls
- 2 Trial impression from a die or printing plate before actual stamp production
- 4 The selvage separating panes on a sheet of stamps.
- 7 Any stamplike adhesive that is not a postage stamp
- 8 The protruding points along the outer edge of a perforated stamp
- 11 The "United Europe" theme celebrated annually since 1956.
- 13 Ink with a coal-tar base.
- 15 Cancellation indicating an item was mailed aboard a ship.
- 16 An unlinked impression made by a printing plate
- 18 A printing process utilizing an intaglio printing plate
- 19 A self-addressed and stamped envelope
- 20 A stamp cut or perforated into two parts,
- 22 Coated paper used as a backing for mint self-adhesive stamps.
- 24 The earliest postmark introduced around 1661. (2 Words)
- 25 An international organization formed in Bern, Switzerland, in 1874
- 28 imperforate sheets given to Pres. Franklin D. Roosevelt in 1933 (2 Words)
- 33 The artwork of a proposed design for a stamp
- 34 A curved printing plate used on a modern rotary press
- 35 A general name used for an automatic stamp
- 36 A continuous roll of paper used in stamp printing.
- 37 caution, your bid needs to change
- 38 The mechanical or digital device that creates a valid denominated postage imprint
- 42 The minor variation commonly found in any basic color
- 43 The unit into which a full press sheet is divided before sale at post offices.
- 46 A hard rubber plate used to apply overprints on postage stamps.





Internet Philatelic Dealers Association Inc ©

Established 23rd February 2002



Page 8

December 2015

Volume 13 Issue 12

## NEWSLETTER DECEMBER 2015

### THE BACK PAGE

*Editors comments: Many thanks to member Jorge Oliveira who runs Kollectbox for this interesting piece. How rewarding would that have been to have met Machado.*

Since May 6, 1840, when the profile bust of Queen Victoria was placed on the first adhesive postage stamp, the Penny Black, thousands of postage stamps have been designed.

Until World War II there was little influence of graphic designers in stamp design and most of us don't know who those countless designers are. We've seen their graphic artistry hundreds, probably thousands of times. We've seen it every time we've used a postage stamp to send a letter. João Machado is one of those designers!

João Machado belongs to a generation of Portuguese designers who gained worldwide recognition for their work!

He was born in Coimbra, 1942 and graduated in sculpture at the Oporto School of Fine Arts, where he returned in 1975 to lecture on the graphic arts for six years. He established his studio in Oporto, 1982.

For the past 20 years, he has also been designing stamps for the Portuguese Postal Services.

He received me at his studio this past August and I had the opportunity to learn all about stamp design.

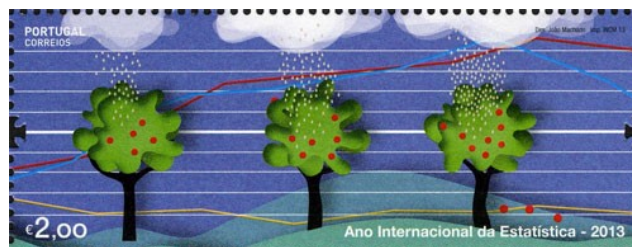
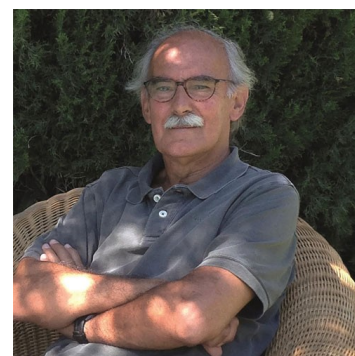
He designed around 150 stamps, all published! This is truly an accomplishment! Among some of his favorite stamps is the José Saramago stamp (1998), The Nobel Prize of Literature 1998; the Timor

Lorosae stamp (2000), the young country that has gained their independence from Indonesia, the cork stamp (2007), the first cork stamp in the world and the Senses stamps (2009), (shown above) where you can train your senses.

He has won several awards and the last one was another Asiago Philatelic Fine Art Award. During the 44th Annual Awards Ceremony, held in Vicenza, Italy, on 6th July 2014, Portuguese stamps issued in 2013 on the theme "International Year of Statistics" received the Asiago prize in the category "Tourism". (See image to the right)

João's work is particularly special when it comes to postage stamp design and the best way for him to design and award winning stamp is quite simple.

The Portuguese Postal Service must have an interesting theme, there must be a short briefing and minimum contacts after that briefing. The illustrator must then have artistic freedom and the stamp will have only the necessary features. Knowledge and experience allow João to easily identify those features. Congratulations João Machado!



### CLOSING REMARKS

That's it from me. Have a wonderful Christmas holiday. I will be in the Philippines enjoying the sun and just taking it easy. No stamps for a week. Best wishes ..... Michael [michaelatipda@gmail.com](mailto:michaelatipda@gmail.com)